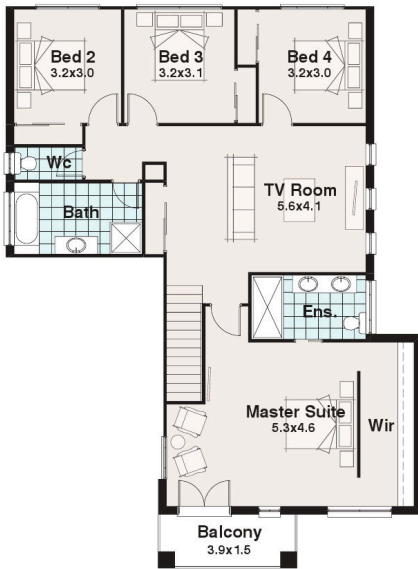


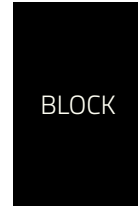
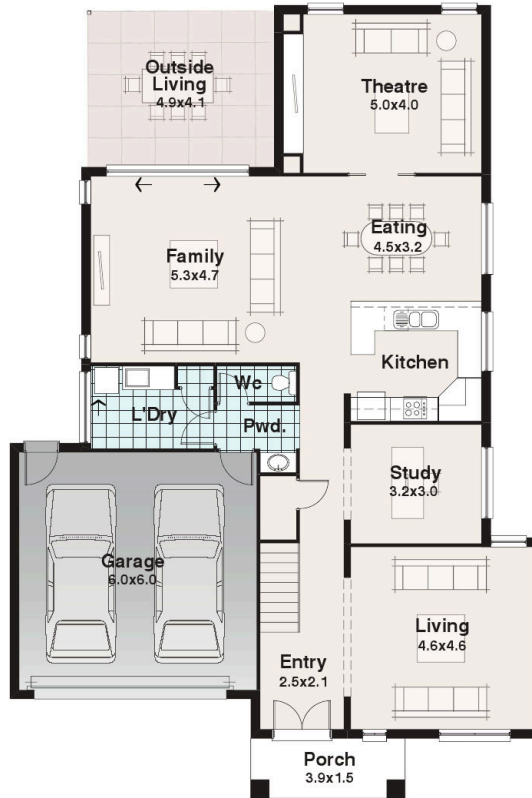


SCENIC
RANGE

First Floor Residence



Ground Floor Residence



BLOCK 27.10m

15.30m

- 4/5
- 2
- 2.5
- 3



Your Home - Your Builder

The Grovedale

Width 13.51m
Length 20.03m

GF Residence	146.85	m2
FF Residence	122.88	m2
Porch	5.85	m2
Balcony	5.85	m2
Outdoor Living	19.91	m2
Garage	39.30	m2
TOTAL	340.64	m2
	36.67	sq

The Grovedale

Featuring 4 bedrooms, 3 living areas and a study gives the Grovedale something a little different from your standard design.

The master bedroom has its own balcony with a large ensuite and walk in robe.